



The Evje - Iveland Part of the Mineral Collection of Gunnar Helvig Hansen and Astrid J. Klungland. Now exhibited at Åkle Center, Iveland

The Evje – Iveland Collection:

The pegmatite dykes in Evje and Iveland in southern Norway are well known to all Norwegian mineral collectors. Most collectors living in the south, began to collect from these occurrences. Near 120 different mineral species are so far identified from these dykes. Some are common, others rare. These dykes have produced numerous fine specimens of many species. Of world quality are the aeschynite-(Y) crystals from The Mølland quarry in Iveland. Most specimens were mined and collected by the owner Knut Mølland during the 1970s and -80s to mid -90s. Large and brilliant crystals of gadolinite-(Y) have been collected at Birkeland in the northern part of Iveland. And not to forget, the fine Thortveitite crystals from Tuftane and Knipan in Iveland.

Local mineral collections are also exhibited at the Mineral Park in Evje, collected by Arnar Hansson. The Fennefoss Museum in Evje presents, thanks to Mr Sigmund Monen, the collections of Odd S. H. Hansen and Theodor Gautestad from Evje, and the collection of Kristen Dale from Bygland.

The Iveland Municipality's mineral collection are now presented in Åkle Center at Birketveit, and contains many specimens from our collection. The Evje-Iveland part of our collection we sold to the municipality on 30. January 2013. The exhibition was opened on 25. March 2015. Norwegian mineral collectors express their admiration for Iveland municipality's enthusiasm and economical backing given this project you now may enjoy in Åkle. (Photo: G.H.H.)



Most of the minerals in our Evje-Iveland collection originate from owners of local feldspar quarries, miners and collectors in Evje/Iveland and in southern Norway. Through our years of collecting, we had the opportunity to buy minerals from persons who worked in the quarries, and mineral dealers as Theodor Gautestad, Bjarne Engestøl and the Landsverk brothers, to mention some. Too few mineral specimens from Evje/Iveland we have collected ourselves. Together with Salve Budalshei in the summer of 1973, we mined some very fine specimens of xenotime-(Y) crystals at Hilltveit in Iveland. We also found a large pocket with white albite crystals at Hilltveit. Other specimens we were offered to buy at reasonable prices as we were considered serious collectors.

Both in Evje and Iveland, feldspar quarries have produced tons of feldspar and quartz for industrial purposes. Theodor Gautestad mined high quality amazonite. Knut Mølland mined feldspar for export from his quarries at Mølland, Iveland. We still remember the mining in Gillerdalen, Rossås where fine specimens of fergusonite-(Y) were found, and at Hilltveit, Feitedalen and at the "Amerika"-quarry. Today, Mr. Hans Kalleberg, Evje mines yearly some tons of feldspar from his quarry at Li in Evje.

Note that we consequently have used the names of the quarries/localities given us by the miners in Iveland and Evje. Except for a few photoes taken by the auther -(G.H.H), all photos in this section is taken by Øivind Thoresen -(Ø.T.)

The photo on front page shows the the feldspar quarry of Olav Lauvland at Lauvland in Evje.



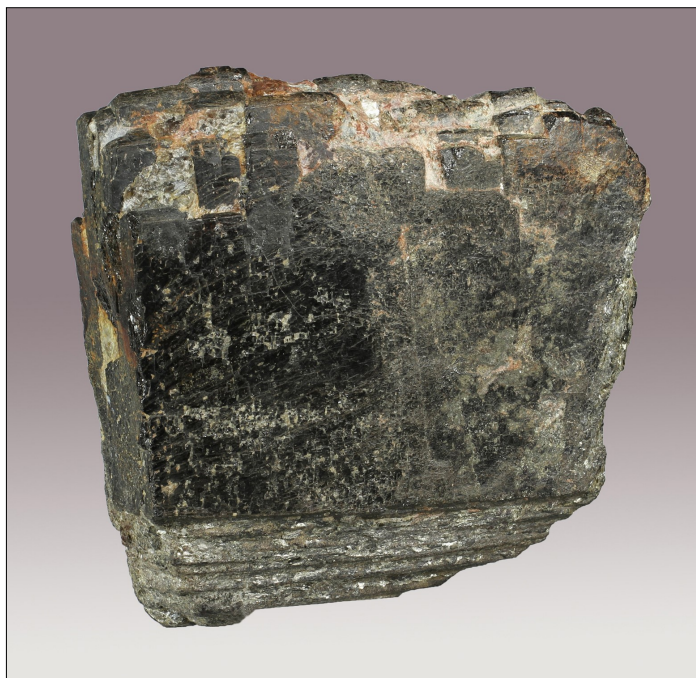
Left: Orest Landsverk presents parts of the Mineral Collection of the Municipality of Iveland at SØRLANDETS MINERALSMESSE in 1982. (Photo: G.H.H. 1982)

NOTE: Copying and/or reprint of photos and text is not allowed without written permission of the author. (Gunnar H. Hansen)

Ettertrykk, fotografisk, elektronisk eller annen form for kopiering av dette innlegget, eller deler av dette er forbudt, uten skriftlig tillatelse av forfatteren. Jfr Lov om opphaverett. Paragraf 43.

Aeschnite-(Y)

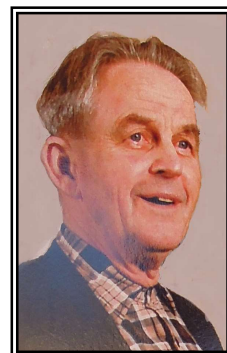
The mineral Aeschnite-(Y), formerly by miners and collectors called “Blomstrandine” is among the more common species in Evje-Iveland, and found in numerous quarries. In our collection we have the following specimens, collected for their quality, their localities and history.

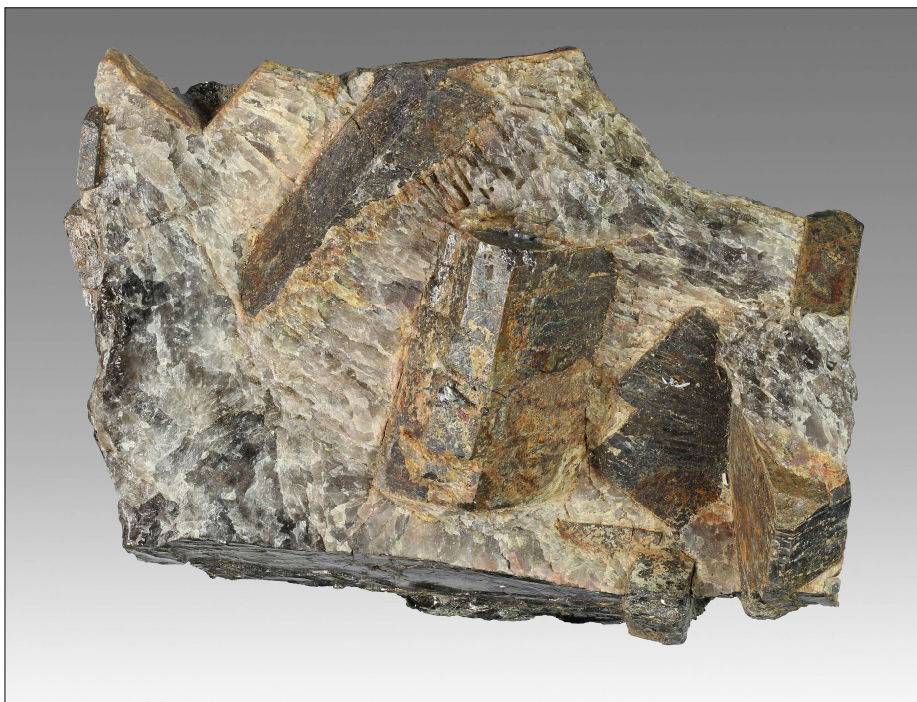


Mølland feldspar quarry, Mølland, Iveland. Mined by Knut Mølland in 1971. and sold to Arthur Landsverk in the spring of 1972. We acquired this specimen by exchange with Arthur Landsverk June 1972. We had just started selling minerals at Åsvald Åsen's petrol station at Skaiå, Iveland. Åsen informed me that Landsverk had taken out one specimen from our sale cabinet as he wanted to exchange this with us. When I met Landsverk the first Saturday, on 3. June, He handed me this crystal and asked if I was satisfied. The specimen, which is one of the largest crystals collected from this quarry, measures 9.5 x 9.5 cm.

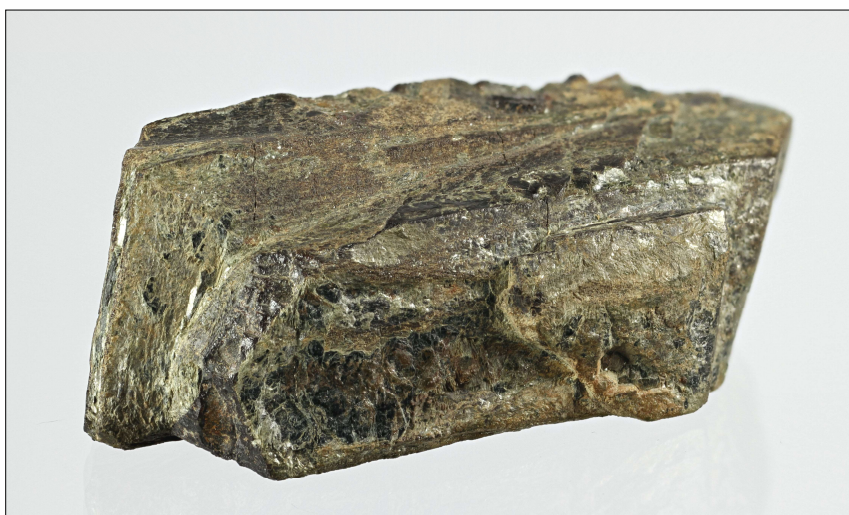
Arthur LANDSVERK

Born at Myrstad in Iveland in 1922. Educated as priest and travelled around speaking the evangelium in Agder. As retired he settled at Myrstad. Worked for many years with his father and brothers (Orest and Willy) in many quarries in Iveland. He collected a lot of minerals for reselling. We met him first time in summer 1972. During the 1970s -'80s we bought many nice specimens from him. He died in spring 2000. (Photo: Olav Landsverk)





Mølland feldspar quarry,
Mølland, Iveland.
Mined by Knut Mølland in
spring 1978 and sold to Arthur
Landsverk, who sold it to
"Kilefjorden" in May 1978. We
exchanged this specimen with
"Kilefjorden" on 11. June 1978.
11 cm across.



Håverstad, Iveland
Two intergrown crystals.
Mined by Theodor Gautestad
around 1958. This was the last
mineral specimen we bought from
Theodor Gautestad's collection.
on 4. September 1981. 7 cm across.

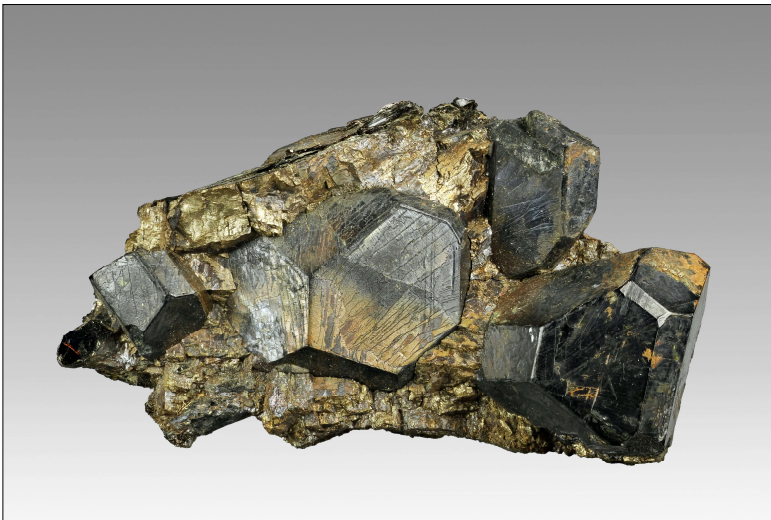


Kåbuland feldspar
quarry, Iveland.
Crystals in feldspar
with spessartine
crystals. From the
collection of Carl
Thorvald Johne,
Krigerø.
We bought this
specimen at the sale
show at Sunnjordet
Sporting Hall in Pros-
grunn, on 9 April 1988
arranged by Telemark
Geological Society,
where a great part of
Johne's collection was
sold. 15 cm across.

Albite

Together with microcline and quartz, albite is the most common mineral in the pegmatites. Nice and well developed crystals are rare. The specimens we have collected, are all albites, and all from Iveland.

Synken quarry, Hiltveit, Iveland.
Mined by Salve Budalehei in July 1973. We came to Hiltveit and went down in the quarry. Right in front of us we saw a halfopened cavity in the wall. The cavity was filled with geyish white calcite crystals of rather bad quality together with about seven or eight groups of snowy white Albite crystals. This one is the largest specimen
It is 14.5 cm tall.



Synken quarry, Knipan. Iveland.
Mined by Aslak Nygård in summer 1982
Crystals with pyrrhotite on mica.
We collected this specimen on 20. June 1985.
8 cm across.

Mølland quarry, at Kjetevann, Mølland, Iveland. Mined by Knut Mølland summer 1984.
Collected on 3. November 1984 at the road along Kjetevann. 7 cm across

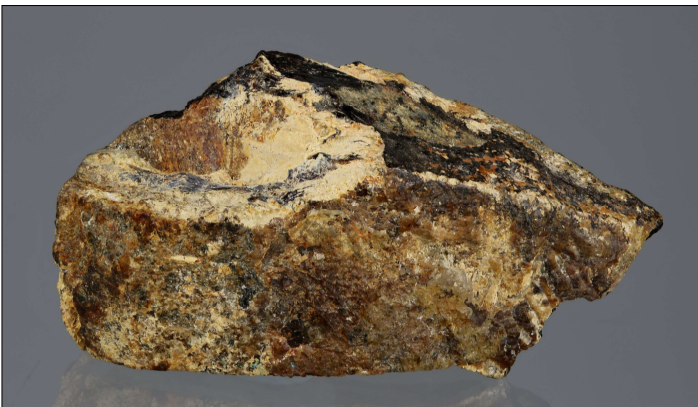




Var: “Cleavelandite”

Birkeland, Iveland.

Collected by Torje Gjerustad summer 1967. His specimens was given to his nephew Johnny Honnemyr in 1988 after Gjerustad died. We had the pleasure selling this collection, and this specimen is a gift from Honnemyr on 20. May 2002. 16 cm across.



Anatase

Heia feldspar quarry. Håverstad, Iveland.

Mined by Ivar and Åsvald Åsen and Hans Gad between 1955 and 1960. In July 1971 we visited Ivar Åsen and he presented us a little box with some black mineral specimens he had collected from the quarry. In this box we found this specimen of anatase and some specimens of betafite. (Now oxycalcipyrochlore) Anatase has never been registered from the pegmatites in the area. In October 1971 we sent some specimens to Geological Museum in Oslo. Ole F. Frigstad gave us the result early in February 1972. The anatase is pseudomorph after titanite. The specimen

measures 3.5 cm across. The light brown massiv mineral is anatas.



Åsvald Åsen's petrol station at Skaia in Iveland hosted our first “mineral shop” in 1972-73. Our very first customer was the municipality's “Lensmann” (Sheriff) Olav Vatnestrøm who was an eager collector, and to whom we applied for permission to sell minerals. (Photo from Iveland bygdebok)

Beryl

Beryl is one of the most popular mineral from Evje-Iveland due to its colors and that it is usually found as nice crystals. After many years of collection, we succeed to obtain the specimens below. Many quarries in the area have produced lots of fine crystals, among them Bratteklev in Evje og Hornnes.

Knipan feldspar quarry, Ljoslandsåsen, Iveland.
This stone has a long story. Mined by Bjarne Engestøl early 1973. as a crystal part, which he sold to Lyder Bang, Songdalen in 1980. Mr Bang sold the raw crystal to Company Kent A/S in Treungen, Telemark, The company sold the crystal piece to Terje Johannessen, Evje. He handed it over to Ivar Gautestad who facettted many stones. This stone he sold to Steinar Soll in 1984. We bought it from Solli in 1986. The stone measures 9 x 9 mm. (Photo: G.H.H.)



Støledalen quartz quarry, Støledalen, Iveland.
The specimen is mined in 1964-65 by Gustav and John Eptevand. The crystal was kept by John Eptevand, Kristiansand, in a box in his basement until 2. April 2004 when we bought it. We met John Eptevand when we was searching for the collection of Torje Gjerustad, Vennesla.
23 cm tall.



Bismuthinite

Both specimens are from Rumpetrollsynken quarry, Landsverk, Evje og Hornnes.

(Left): We bought this specimen at the sale show at Sunnjordet Sporting Hall Porsgrunn, arranged by Telemark Mineral Society on 9. April 1988, when they sold parts of the mineral collection after the late Carl Thorvald Johne. The specimen measures 14 x 9 cm. The crystal specimen right is collected on the dumps by Steinar Solli summer 1971. We bought the specimen from Solli on 3. June 1972. 4.5 cm long.



Calcite

Jokeli feldspar quarry, Landsverk, Evje.

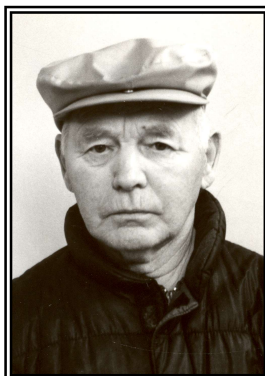
Crystals on microcline with green stilbite-Ca crystals.

Mined and collected by Theodor Gautestad on 21. July 1988. Sold to us on 22. August 1988. Found in a larger pocket with a limited number of calcite crystals and quartzes covered with green stilbite-Ca. According to Gautestad, this was the largest and best specimen from the pocket. 29 cm across.



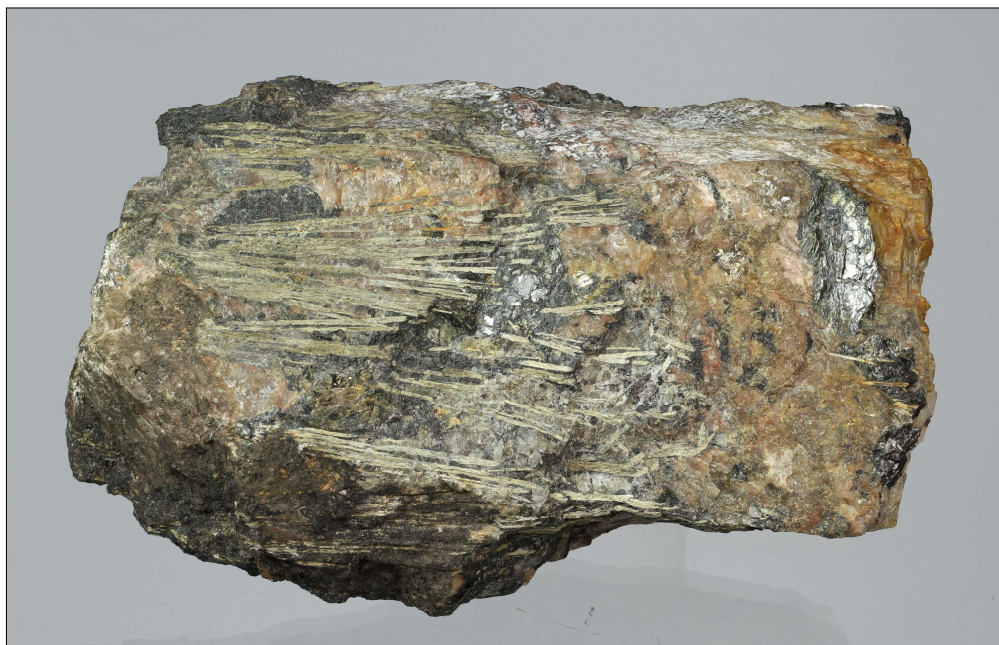
Calcite

Jokeli feldspar quarry, Landsverk, Evje.
"The Rocket" Single crystal with some quartz matrix.
Mined 1966 by Theodor Gautestad.
Sold to Steinar Solli in July 1969.
In our collection by exchange
with Solli in March 1972. 8 cm tall.



Theodor GAUTESTAD

Born at Gautestad, Evje in 1908. Already in 1936 he started mining for feldspar in Evje and Iveland. In 1946 he established his own mineral shop and company: A/S Setesdalsstein in Evje. His shop soon became a meeting place for all people interesting in minerals. We had a very good relationship with Gautestad. During many years, from our first visit in his shop summer 1967 until 1990 we bought many fine mineral specimens from him. During 45 years of mining, in totally 35 quarries Gautestad experienced what most mineral collectors may only dream about. His mineral collection was sold to Evje og Hornnes municipality and can be seen at Fennefoss museum, Evje. Theodor Gautestad died in 1991. (Photo: G.H.H. 1984)



Calcio-ancylite-(Ce)

Våne feldspar quarry, Evje og Hornnes. Pseudomorph after allanite-(Ce). Re-identified from former ancylite-(Ce) by Thomas Husdal, Bodø. The specimen was collected mid 1970s by O.S. H.Hansen, Evje and exchanged with Steinar Wrangsund on 24. June 1977. Sold to Edvard Kristoffer Hannevig on 4. April 1982. Mr. Hannevig died in 1998 and his collection was sold by Telemark Geological Society, from whom we bought the specimen on 6. June 2011 at The Iveland Mineral Show. 11.5 cm across.

Chrysoberyl

Nateland feldspar quarry, Nateland, Iveland.
Mined by Magnus Nateland back in the
1960s.

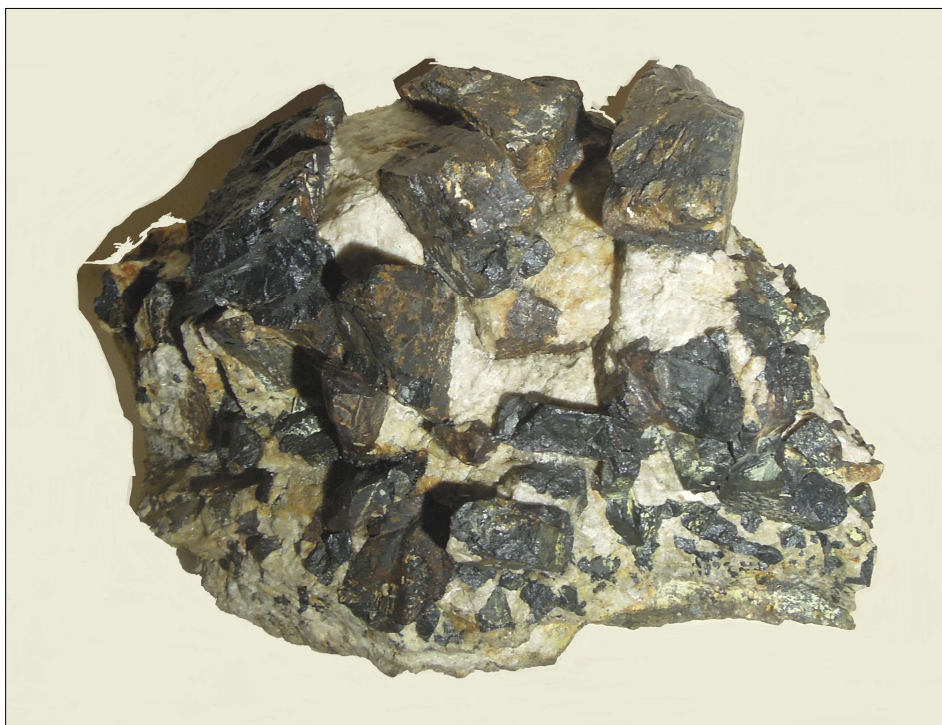
Handed over to Theodor Gautestad 1969-70.
Sold to Arthur Landsverk, Iveland in 1972. We
exchanged the specimen with Landsverk on
3. October 1972. 8 x 7.5 cm.



Columbite-(Fe)

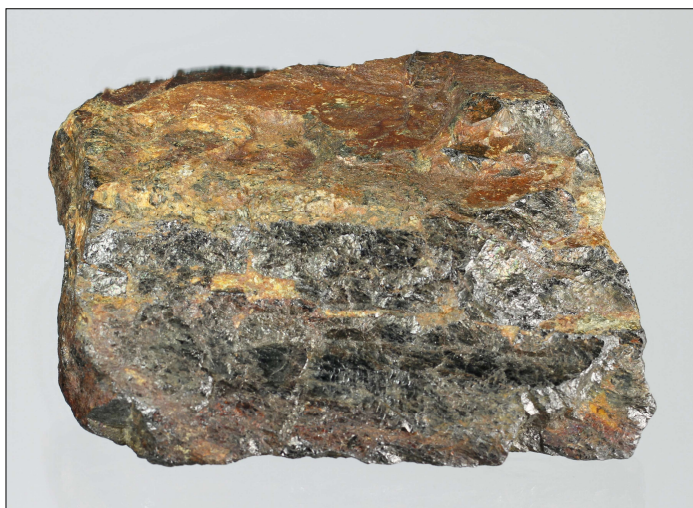
Håverstad, Iveland.

Collected by Gustav Høyenes
in July 1969. We exchanged
the specimen with Høyenes
on 10. January 1900 for
a specimen of thortveitite,
which we had bought
from Bjarne Engestøl,
Iveland, together with the
specimen on page 27.
25 cm across.
(Photo: G.H.H.)



Davidite-(La)

Tuptan, Birkeland, Iveland.
Mined and collected by Orest
Landsverk summer 1954.
We bought the specimen from
Landsverk 30. August 1980.
8.5 x 8 cm.





Euxenite-(Y)

Jokeli feldspar quarry,
Landsverk, Evje.
Mined in June 1988 by
Ivar Gautestad and
Oddleiv Kroneberg in June
1988. Acquired by exchange
with Kroneberg 20. August
1988.
20 x 16 cm. (Photo: G.H.H.)
See page 20: Polycrase-(Y)



Euxenite-(Y)

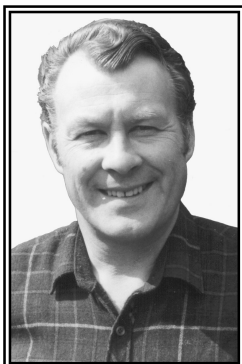
Knipan, Ljoslandsåsen, Iveland.

Mined by Bjarne Engestøl in 1967-68. Collected summer 1971 at the dumps by Jan-Kåre Haugland .

We exchanged this specimen with Haugland for a single xenotime-(Y) crystal on 30. October 1973.

7 cm across.

See page 20: Polycrase-(Y)



Jan Kåre HAUGLAND

Born in 1944 in Finsland, Songdalen. He got interests for minerals as a student at School of Teaching in 1964 in Kristiansand. Settled with family in Kristiansand and worked as teacher. We met Haugland at the meetings in the Society "Sørlandets Geologiforening" early 1970s. He travelled around in Iveland and Evje and collected many fine minerals. In 1976 he moved back to Finsland where he worked as teacher, and also turned into politics. After 1976 he actually ended collecting. He realized his collection in 2009. Some local specimens are now presented in the mineral collection of Iveland municipality. (Photo G.H.H. 1984)

Fergusonite-(Y)

Fergusonite belongs to the rarer mineral species from Evje-Iveland. The best crystals came from Gillerdalen feldspar quarry at Rossås and from Mølland, Iveland. Fine crystals were also collected from Jokeli quarry at Landsverk, Evje. We had three specimens represented in our collection.

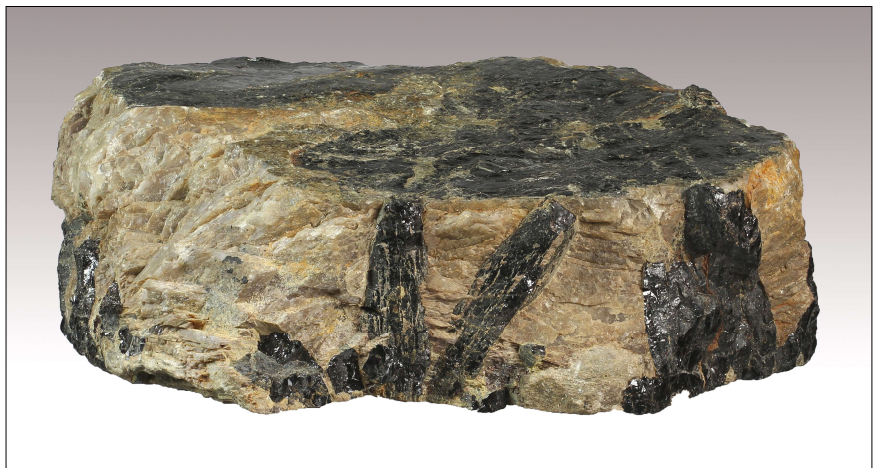
Jokeli feldspar quarry, Landsverk, Evje.
Mined early 1970s by Theodor Gautestad. Sold to
Jan G. Jølle on 10. June 1977. Acquired by
exchange with Jølle in July 1986.

The fergusonite from Jokeli quarry varies by
appearance, like burned outside and with a
brown color, to shiny with a clear greenish color.
11 x 10 cm.



Upper Mølland feldspar quarry, Mølland, Iveland.
Group of intergrown crystals.
Mined by Knut Mølland in May 1987.
We bought this specimen from Mølland on 11. July
1987. 11 cm tall.

Gillerdalen, Rossås, Iveland.
Mined around 1968-69 by Knut
Bråthen. Collected by Gustav
Høyne in July 1969. Exchanged
with Høyne on 10. Desember
1973. The Gillerdalen feldspar
quarry produced a number of fine
fergusnite-(Y) crystal specimens,
besides some very fine crystals of
monazite-(Ce) during the 1960s
and the first years of the 1970s.
13 cm across.





Fersmite

Jokeli feldspar quarry, Landsverk, Evje.

Mined by Theodor Gautestad,

June 1973. Acquired by purchase on 20. July 1973. The crystal group is 7 cm tall.

The Fersmite occurs as a thick greyish-brown layer on Columbite-(Fe). Identified by Alf Olav Larsen and described in the magazine MineralienWelt vol. 20/1999. So far, only four specimens of Fersmite are found in the Jokeli quarry. Later Fersmite is found in Litjøn quarry, Frigstad, Iveland as pseudomorph crystals. 1 to 2 millimeter of size.



Fluorapatite

Solås feldspar quarry, Solås, Iveland.

Mined by Kjell Gunnufsen

and Finn O. Honnemyr in

July 1982. Collected at the

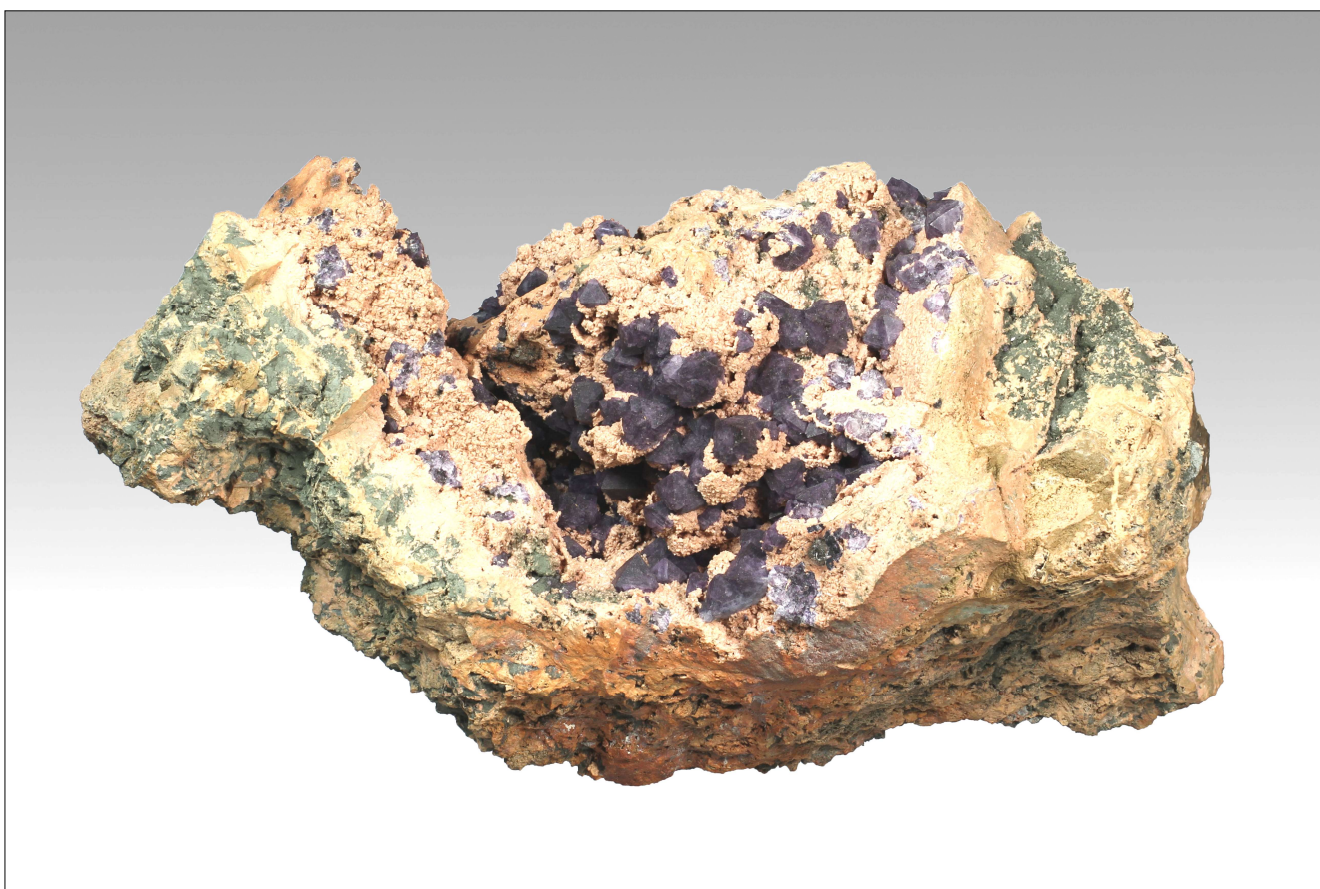
quarry by Alf Olav Ropstad same summer.

Gift from Ropstad on 8. August 1982.

Greywhite crystals to 1,5 cm in diameter.. Specimen measures 7.5 x 6 cm.



Terje Stenersen takes a look at the entrance to the Høgetveit feldspar quarry in Evje. The now discredited mineral tombarthite-(Y) originated from this quarry. (Photo:G.H.H.)



Fluorite

Jokeli feldspar quarry, Landsverk, Evje.

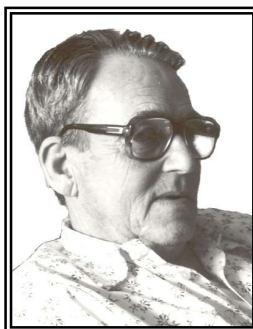
Mined by Theodor Gautestad in summer 1968. Sold to Gustav Høyenes in July same year. Gift from Høyenes to Steinar Solli in November 2003. We exchange it with Solli on 20, July 2003. 25 cm across.

We have seen specimens on sale labeled Jokeli/Landsverk 1 with cubic crystallization. Unfortunately, these are not from Landsverk, as all fluorite crystals from this location have octahedral crystallization.



Gadolinite-(Y)

Slobrekka feldspar quarry, Frigstad, Iveland.
Mined and collected by Orest Landsverk in the early 1970s.
This specimen was one of Landsverk's most favorite specimens, due to its quality and odd crystallization.
After many years he finally sold it to us on 22. July 1982.
7 cm tall.



Orest LANDSVERK

Born at Myrstad Iveland in 1911.
Worked most of his younger days with his father, Olav Landsverk and also with his brothers (Arthur and Willy) in the quarries in Iveland. Settled at Solstad, Iveland with family. Moved to Vennesla in 1972 where he worked at company Vennesla Metal Refinery until retirement. Travelled as pensionist very often to Iveland and Evje to search for minerals. He loved the searching and could spend hours at the dumps. "Only a pensionist can afford to look for minerals" he said. Worked with his brothers for many years mining for thortveitite, a mineral which during parts of the 1950s and 60s achieved a very high price. Already in 1970 we met Orest first time, and we spent many hours in his company talking about and looking at minerals. He also introduced us to many other miners and collectors in both Evje and Iveland. He died in 1992. (Photo G.H.H. 1982)

Galena

Jokeli feldspar quarry,
Landsverk, Evje.

Mined by Theodor Gautestad in the end of the 1960s. Sold to company Thulitten Stenhus, Evje in 1975. We bought it from this company in October 1976. 2 cm on edges. (Photo: G.H.H.)



Ilmenite

Tunnellen feldspar quarry, Hilltveit, Iveland.
Crystal in feldspar and mica.
We collected it at the road to Tunnellen quarry at Hilltveit on 20. September 1972. Crystal is 2 x 2 cm.
Specimen size 4 x 6 cm.